

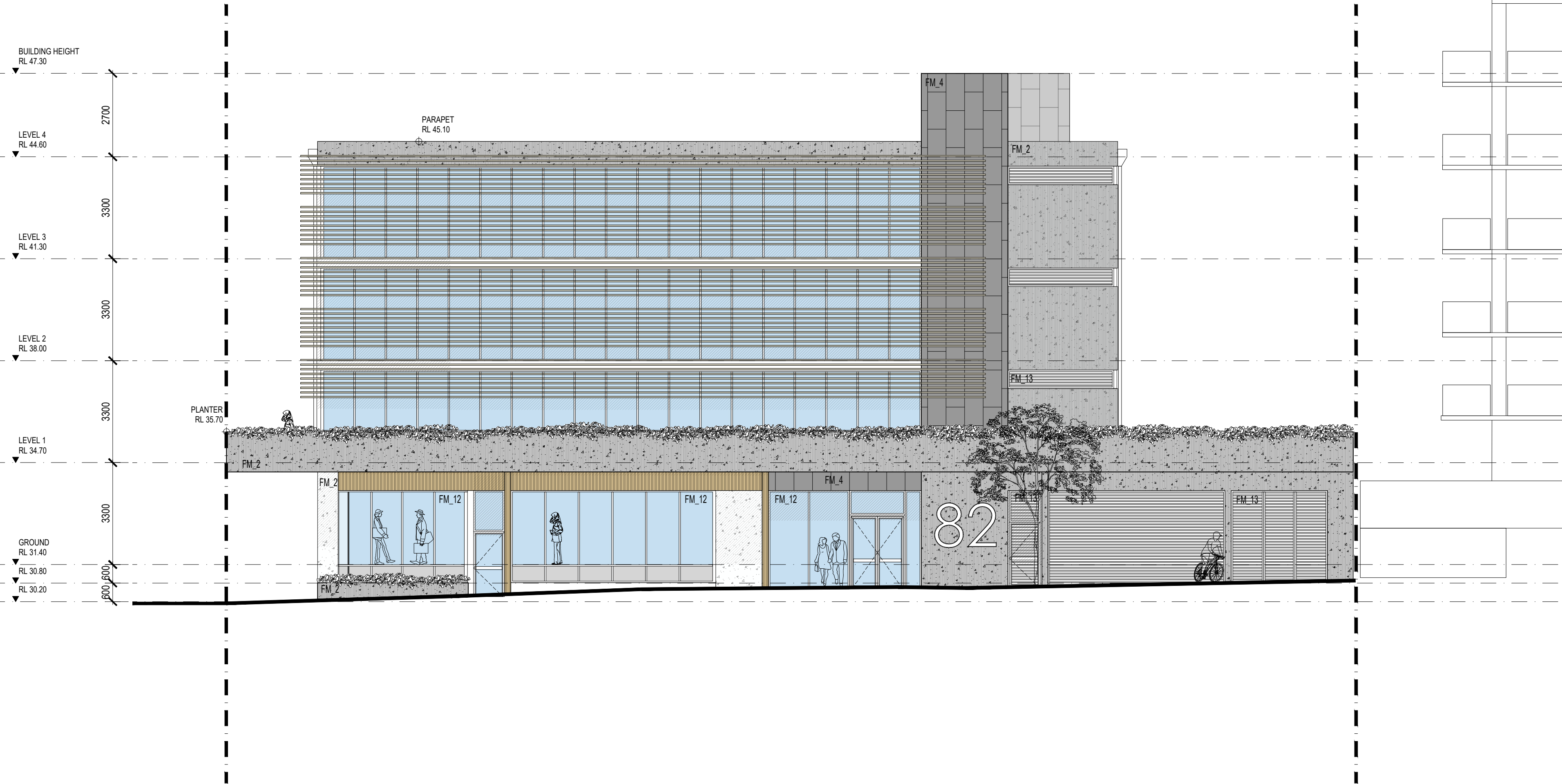
01 EAST STREET ELEVATION

MATERIAL SCHEDULE

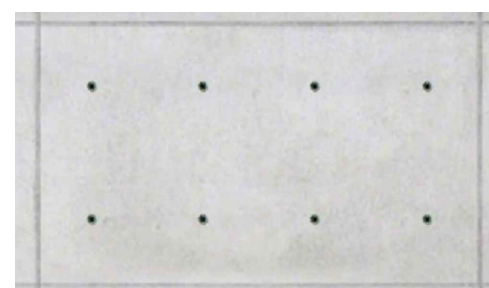
- FM_1 - ON SITE CONCRETE - TEXTURE_1
FM_2 - ON SITE CONCRETE - TEXTURE_2
FM_3 - CFC CLADDING - EXO TEC - HAVANA COLOUR
FM_4 - CFC CLADDING - EQUITONE TECTIVA - COLOUR TE85 GRAPHITE EXPOSED JOINTS
- FM_10 - PC ALUMINIUM CURTAIN WALL - SUN SHADE BRACKET - MONUMENT COLOUR
FM_11 - PC ALUMINIUM SUN SHADE PROFILE - HAVANA COLOUR
FM_12 - PC ALUMINIUM COMERCIAL RANGE WINDOWS AND DOORS - MONUMENT COLOUR
FM_13 - PC ALUMINIUM LOUVER WINDOWS & DOOR - MONUMENT COLOUR
FM_14 - PC ALUMINIUM HORIZONTAL ELEMENTS - HAVANA COLOUR

ALL ROOF TO BE COLOURBOND ROOF SHEETING - WHITE COLOUR

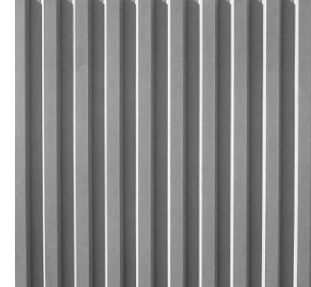
ALL GLAZING TO BE AS PER PART J
ALL WEST GLAZING TO BE FROSTED - FOR PRIVACY



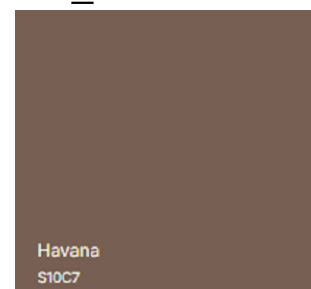
02 NORTH STREET ELEVATION



FM_1



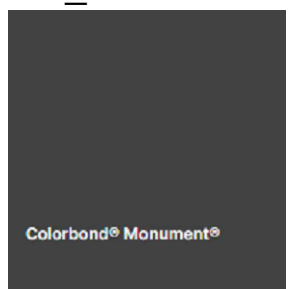
FM_2



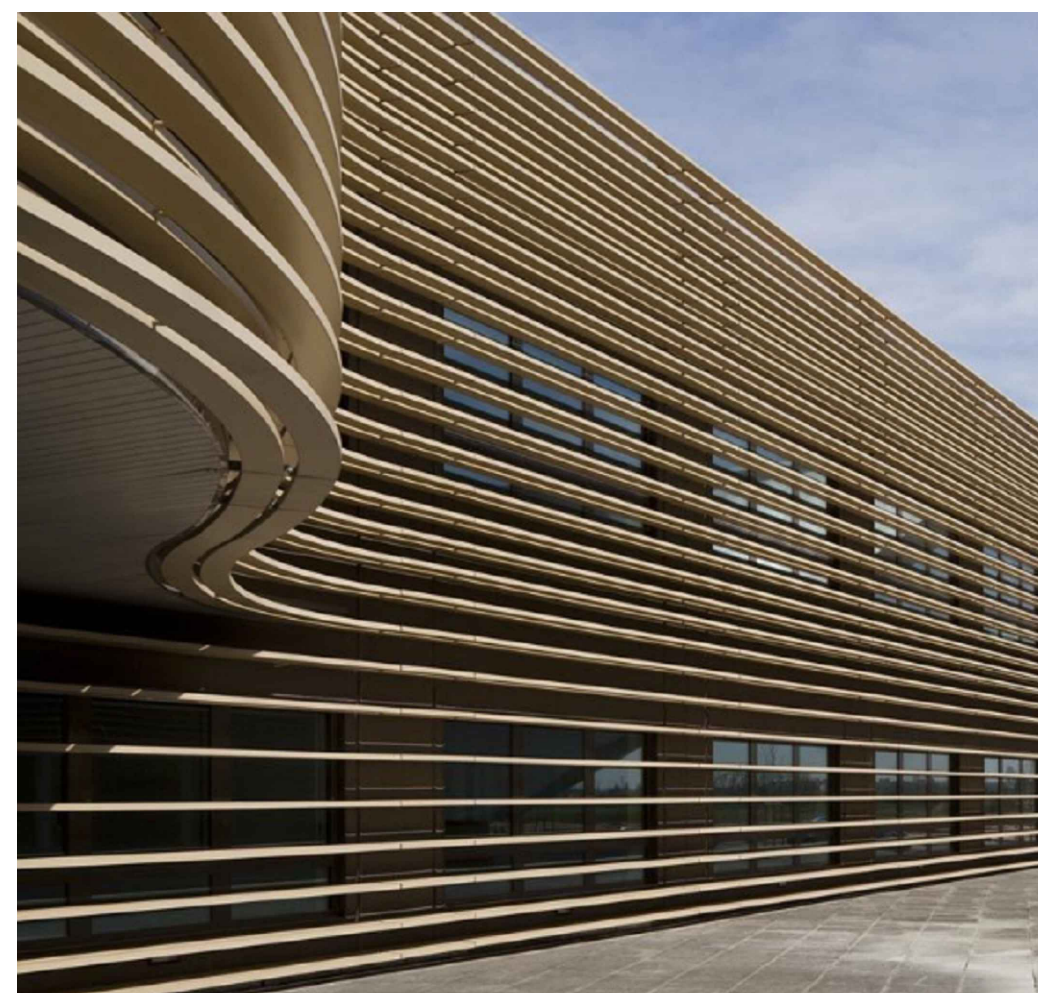
FM_3 - HAVANA



FM_4



MONUMENT COLOUR



FM_11_REFERENCE ONLY